

Duo Concertante

Op. 9
Violin, Guitar

Revised & edited by Abel Nagytóthy-Toth

Matteo Bevilacqua
(1772-1849)

Andantino

p *dolce*

6

10 *f* *p*

16 *p*

21

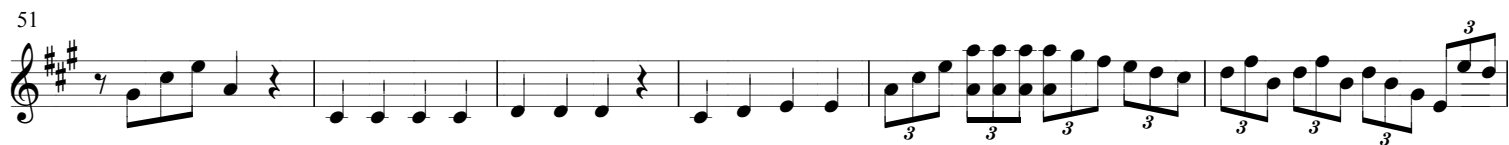
27

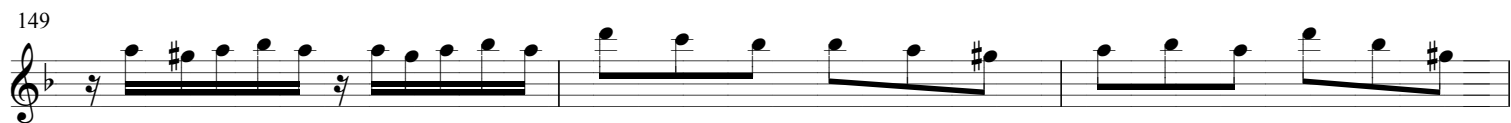
32

36 1. 2.

40

45





229

sf sf sf p

235

f dolce

241

247

252

sf

257

sf

261

sf dolce

266

f p

272

p

276

sf sf